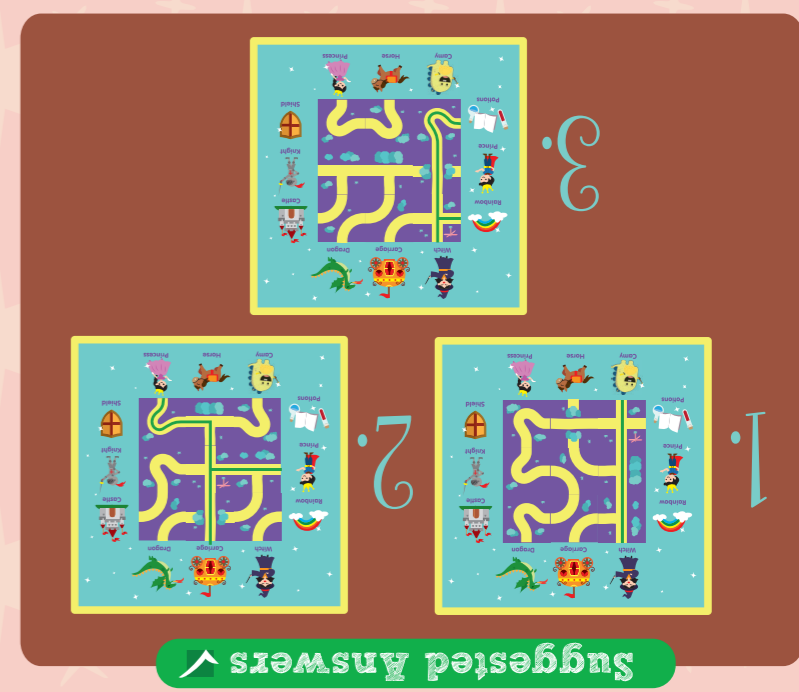
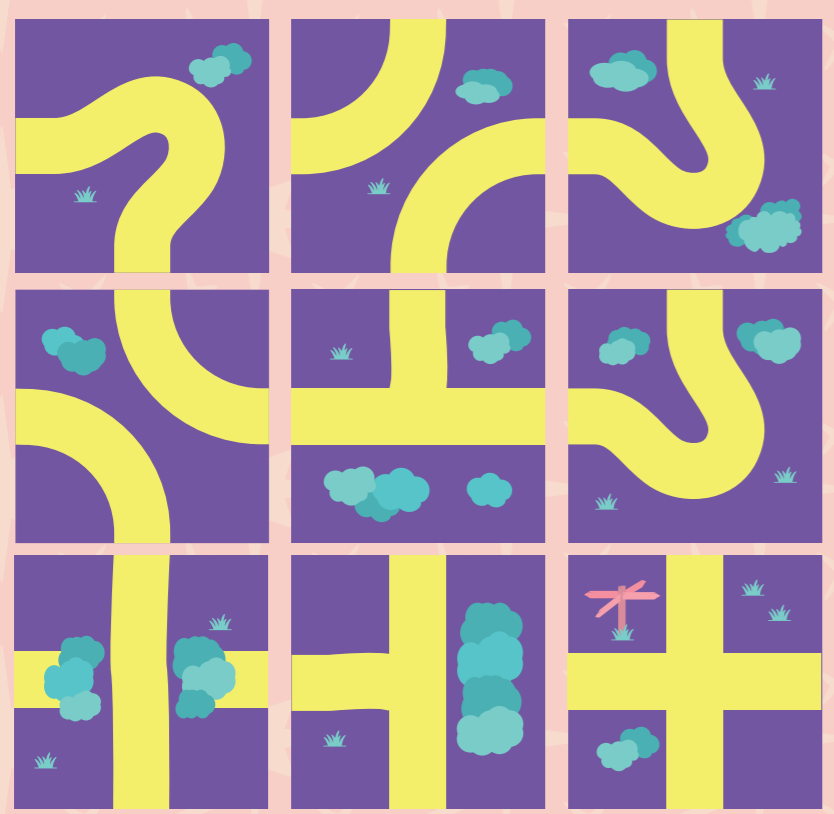


# Find the Enchanted Path!

**Objective** Here and there, the magical paths take you anywhere! Help Camy and the fairytale characters find each other by making paths through the enchanted forest.

- Instructions**
1. Pop the nine puzzle pieces out along the perforated lines.
  2. Arrange the puzzle pieces on the gameboard to connect the characters on the task list.
  3. Try all three tasks before referring to the suggested answers!

- Task List:**
1. Make a path through the forest to connect Camy and the Witch.
  2. Take the Prince and Princess to their royal Carriage. Find a way through the forest to link the Prince, Princess and Carriage together.
  3. Help the Witch to find her Rainbow-making Potions. Create paths in the forest to join the Witch, Rainbow and Potions together.



The very first tale of **Cinderella** was recorded in **China** around **850 AD.** That Cinderella is known as **Yeh-Hsien.**

**Source:**  
Rahim, A. (2016). 11 Fun Facts about Fairy Tales - discoverReads.  
Retrieved from:  
<http://www.nlb.gov.sg/discoverreads/2016/01/28/11-fun-facts-about-fairy-tales/>

In **Roald Dahl's** version, **Little Red Riding Hood** actually **strikes back** against the **wolf!**

To learn more about Fairy Tales, look up call number JP/J 398.2 in the non-fiction section.



Visit us at:  
<http://www.nlb.gov.sg/discoverreads>

